

St Mary's Acton  
St David's Wettenhall &  
St Oswald's Worleston  
November 2024



**The Cross Country Parishes  
of  
Acton with Worleston, Church  
Minshull and Wettenhall**

*Dear Friends,*



I've recently read a book by someone who spent their early life as a coal miner. He'd been a Bevan boy. He was conscripted during World War 2 but sent to work in the mines instead of the armed forces. He described the hard work involved but most of the time this was offset by the spirit of camaraderie amongst the miners.

One particular day he was walking towards the pit for his early morning shift. It was still dark. He was feeling down-hearted, wishing that he was somewhere else, doing something different with his life. Then, he wrote - 'The sun rose over the slag heaps and there was more beauty in that moment than I could hold'.

Suddenly he says 'There was hope. A promise of better things'.

The light and warmth of the sun keeps us alive. The beauty it creates keeps us feeling positive.

Sometimes we seem to be walking through the slag heaps. We see the dark side of life, the wars, the suffering, the hatred, the pain and despair. But the sun always rises - even on rainy November days, and offers us the possibility of beauty and goodness.

Among the graffiti found on the wall of a cellar in a concentration camp at the end of the war was one which read:

'I believe in the sun even when it is not shining.

I believe in love even when I cannot feel it.

I believe in God even when He is silent'.

Thankfully, we will never have to suffer the depths of horror into which this prisoner was placed.

May we appreciate, and be uplifted, by the moments of beauty which appear in our lives, when we least expect it.

*Ann*

## Contents

	<b>Page</b>	<b>Cross Country Pages</b>	<b>20</b>
<b>Letter</b>	<b>2</b>	<b>Recipe</b>	<b>24</b>
<b>Services</b>	<b>3</b>	<b>Worleston News</b>	<b>28</b>
<b>Wettenhall News</b>	<b>4</b>	<b>School News</b>	<b>34</b>
<b>Acton News</b>	<b>12</b>	<b>Contacts</b>	<b>43</b>

# Sunday Services

## Acton

- 3<sup>rd</sup> Nov 11:00 am Communion, 6:00 pm Commemoration
- 10<sup>th</sup> Nov 8:00 am Communion, 10:50 am Remembrance
- 17<sup>th</sup> Nov 10:00 am Messy Church
- 24<sup>th</sup> Nov 8:00 am Communion, 11:00 am Morning Prayer
- 1<sup>st</sup> Dec 11:00 am Communion

## Church Minshull

- 3<sup>rd</sup> Nov 11:00 am Service of the Word
- 10<sup>th</sup> Nov 10:50 am Remembrance
- 17<sup>th</sup> Nov 11:00 am Cafe Church
- 24<sup>th</sup> Nov 11:00 am Messy Church
- 1<sup>st</sup> Dec 11:00 am Service of the Word

## Worleston

- 3<sup>rd</sup> Nov No Service
- 10<sup>th</sup> Nov 10:50 am Remembrance
- 17<sup>th</sup> Nov No Service
- 24<sup>th</sup> Nov 9:30 am Communion
- 1<sup>st</sup> Dec 4:00 pm Advent Carol Service

## Wettenhall

- 3<sup>rd</sup> Nov 11:00 am Creationtide Green Cafe
- 10<sup>th</sup> Nov 10:50 am Remembrance
- 17<sup>th</sup> Nov 11:00 am Communion
- 24<sup>th</sup> Nov 6:30 pm Informal
- 1<sup>st</sup> Dec 4:00 pm Christingle

St David's Church Wettenhall			
Sidespersons		Cleaning and Flowers	
3 <sup>rd</sup>	Nov	Mrs A Brooks	Mrs S Ward and Mrs I Drinkall
10 <sup>th</sup>	Nov	Mrs M Sherry	Mrs M Sherry
17 <sup>th</sup>	Nov	Brownies	
24 <sup>th</sup>	Nov	Informal	Mrs K Noden
1 <sup>st</sup>	Dec	Churchwardens	
<b>Visit: <a href="http://www.wettenhallchurch.org.uk">www.wettenhallchurch.org.uk</a></b>			

## Condolences

To the family of **Doreen Boddington** formerly of Cholmondeston. Our thoughts and prayers are with Rupert and Joanna and all who are mourning the loss of a loved one.

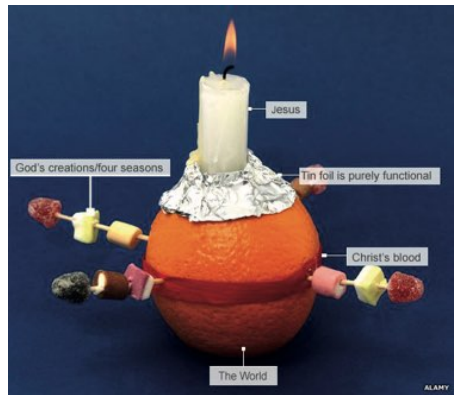
## We will Remember them

Our annual service of Remembrance takes place on:  
**Sunday 10th November at 10.50am.**



## Christingle

Please join us for our annual Christingle Service on **Sunday 1st December at 4pm.** We look forward to welcoming Calveley School children and their choir.  
**Everyone is very welcome!**



## Coffee and Cake

The next meetings will be on **November 7<sup>th</sup> and December 5<sup>th</sup>** from 10-12 noon in Church. **Everyone is very welcome to pop in for as little or as long as they wish.**



# *Green Café*

## *Worship*

**Sunday 3<sup>rd</sup> November at  
11am**

**At St David's Wettenhall**

*Recycle, Reuse, Re-work - doing it better*

*All activities are family friendly,*



*come ready for action!*

## All is safely gathered in.

Our Harvest Festival on the evening of 6th October saw the church beautifully decorated with Autumnal flowers, fruits and vegetables of the season. Following our grateful thanks for another bumper harvest we shared a delicious meal of roast beef and ham from Grants Butchers. Audrey, Mary and their team provided an assortment of colourful salads and desserts which were thoroughly enjoyed by everyone. A huge thank you to all those who helped to make the evening such a wonderful harvest celebration.

We continued our celebrations the next day when Calveley School children, their parents and teachers, held their Harvest Festival Services. We enjoyed listening to the children sing 'Cauliflowers Fluffy' and 'Harvest Festival Rumba' as well as reading some Harvest poems and prayers.

The school generously filled a table with food donations for the Nantwich Foodbank. A very practical demonstration of sharing what we have with those who are less fortunate than ourselves. Well done and grateful thanks to everyone who took part in our Harvest weekend.





## Darnhall Brownies

1st Darnhall Brownies have been on an adventure. From Friday 20th to Sunday 22nd September our pack visited the Girlguiding, Pettypool Activity Centre. Our theme was the Olympic and Paralympic games. We did so many activities from creating our own Olympic torch, 100m race, shot-putt and long jump as well as team races and so much more. It was a wonderful weekend full of love, laughter and joy and 1st Darnhall Brownies are now inspired by the Olympic motto, Faster, Higher, Stronger - Together.





## Darnhall and Wettenhall WI

### October 2024 Meeting; Hotpot Supper

Report of WI Meeting on 1<sup>st</sup> of October 2024

The members' of Darnhall and Wettenhall Women's Institute met in Darnhall Village Hall on the 1<sup>st</sup> of October 2024 at 7.00pm.

Members', together with friends and a number of new members', came along to enjoy what has become the Hot Pot Supper meeting for the start of the Autumn season.

This begins the Autumn/Winter Programme which, in common with the community of St David's Church at Wettenhall, always seems to involve food. The lovely Hot Pot and Apple Pie were supplied by Foodcraft in Winsford. The evening began with the singing of Jerusalem and the Grace. Then the food was served by the committee and other members'. The beautiful table centres had been arranged by Ann Hignett, which then became raffle prizes. Following the delicious food, members' chatted and were reminded of dates for the month, which included walking, lunch and craft. The next meeting on the 5<sup>th</sup> of November is the Annual General Meeting, and maybe there will be some fun and food too. The 3<sup>rd</sup> of December is the member's Christmas party.

New members' are always welcome and the first meeting in 2025 will be on the 4<sup>th</sup> of February 2025 at 7.00pm at Darnhall Village Hall.

## Darnhall Village Hall

### Sunday 17th November

**Christmas Painting Afternoon** – a chance to come along and create a festive painting with a selection of Christmas tapas. Bring your own drinks. Cost £30 – contact Angela Hancock to book or get further details – Mobile 07872 059558

### Saturday 7th December

**Turkey and Tinsel Supper** – a chance to start your festivities with a meal and a quiz. £20 per person and it's ticket only. Bring your own drinks. Book by contacting Marjorie Sherry on 01270 528367 or Ann Hignett 01270 528311



# Hi Quality Haylage

Haylage, Hay and Straw  
in Large or Small Bales

Shavings and Easi-Bed  
also available

Contact Ann or Roger on  
01270 528273 or 0776 8881487  
For Price and Delivery Information  
[www.haylagefromnicholas.co.uk](http://www.haylagefromnicholas.co.uk)

# THE LITTLE MAN



Opening Times  
Monday - Tuesday 1 pm - 11:00 pm  
Wednesday - Saturday 12 pm - 12 am  
Sunday 12 pm - 11 pm

TRADITIONAL, FRIENDLY PUB  
with a Beer Garden

CASK ALES

2 Regular Ales + 2 Guest Ales

A WIDE RANGE OF BEERS, WINES  
AND SPIRITS

FOOD NOW BEING SERVED

Wednesday - Sunday 12 pm - 8 pm

Sunday Roast 12 pm - 5 pm (Bookings only)

Well Behaved Children and Dogs Very Welcome

The Little Man, Winsford Road, Wettenhall, CW7 4DL, 01270 528624

# INSURANCE THAT'S ON YOUR DOORSTEP

Having a local office means we're accessible, whether you need to make changes to your policy or make a claim.

Our insurance products and financial planning services include:

- Car
- Home
- Business
- Farm
- Equine
- Property Owners
- Critical Illness
- Income Protection
- Pensions

NFU Mutual Financial Advisers advise on NFU Mutual products and selected products from specialist providers. They'll explain the advice services offered and the charges. Financial advice is provided by NFU Mutual Select Investments Limited.

For a real conversation about your needs call us or pop in  
**NFU Mutual, River House, Weaver Bank, Nantwich, Cheshire, CW5 5EA**  
**Tel: 01270 624074 | [Nantwich\\_agency@nfumutual.co.uk](mailto:Nantwich_agency@nfumutual.co.uk)**



**NFU Mutual**  
INSURANCE | PENSIONS | INVESTMENTS

Approved by NFU Mutual 15/02/2023

LS Young is an appointed representative of The National Farmers Union Mutual Insurance Society Limited (No. 111982). And an introducer to NFU Mutual Select Investments Limited, a member of the NFU Mutual group of companies.

**St Mary's Church, Acton  
Sidespersons**

3 <sup>rd</sup> Nov	Sandra and Mike Houlston
10 <sup>th</sup> Nov	Susan and Charles Hull
17 <sup>th</sup> Nov	Tracey and Peter Foster
24 <sup>th</sup> Nov	Chris and Christine Barratt
1 <sup>st</sup> Dec	Gill Evans and Philip Percival
<b>Visit: <a href="http://www.stmarysacton.org">www.stmarysacton.org</a></b>	

**Tea at the Tower Guided Walks**

**The next walks are:**

- 3<sup>rd</sup> November
- 22<sup>nd</sup> December
- 5<sup>th</sup> January 2025

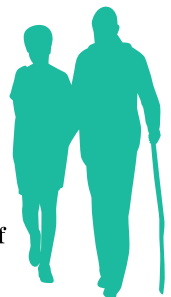
Tea at the Tower is open every Sunday from 2:30 pm - 4:30 pm.

On the above dates there is a guided walk departing the church at 12:45 pm. Nick organises circular walks varying between 3 to 5 miles, then returning to the church for a refreshing cup of tea or coffee and a slice of delicious cake.

The pace of the walks is relaxed, and the routes generally involve canal towpath and lane walking. The footpaths should be good (also hopefully dry?) and only a small number of stiles are negotiated. Stout outdoor shoes or walking shoes / boots are recommended.

**All are welcome including dogs on leads**

For further information please phone Nick Harley, Lead Walker, on 01270-620612 or 07710983125.



**From the Registers**

**Baptisms**

- 4 August **Finley Theo Holme**, son of **Steven & Rebecca Holme**
- 15 September **Theodore James Cosford**, son of **Luke & Sophie Cosford**
- 6 October **Henry Robert Stelmaszek and Harriet Jane Margot Stelmaszek** children of **Ben Stelmaszek and Emily Vaughan**

**Weddings**

- 7 September **Scott Liam Alexander Thorpe and Emma Louise Patrick**
- 14 September **Philip Jeremy Arnold and Hannah Elizabeth Ives**

- 5 October **Michael James Jump and Sarah Elizabeth Jones**

**Funerals**

- 7 August **Alma Jane Louise Gregory** (died 20 July 2024)
- 19 August **Aileen Holland**
- 3 September **Betty Eileen Parry** (died 14 August 2024)
- 18 September **Shirley Rose Williams** (died 29 August 2024)
- 18 September **Clifford Young** (died 26 August 2024)

FEATURING SOPRANO JESSICA THAYER

# THE Proms ACTON

SUNDAY 10<sup>th</sup> NOVEMBER 2024

6:30pm



**Tickets available from Stephan Davies 01270 624135 | 07731 800663**

## Acton Christmas Tree Festival

Are you ready for a Glittering, Glitzy, Gogglebox Christmas?

St Mary's Acton is hosting its fabulous Christmas Tree Festival on the weekend of 6/7/8 December. This year's theme - A Gogglebox Christmas; Past and Present - will see trees depicting our favourite TV shows from over the last few decades. Pop the dates in your diaries and look out for special events over this festival weekend.

Highlights will include:

**Friday 6th December - 2:30 pm**

Opening event with songs and readings by children from Acton CE Academy Primary School.

**Saturday 7th December**

**10:00 am - 4:30 pm**

Exhibition open during the day with refreshments. Christmas Songs amongst the trees in the afternoon by local singers.

Evening - Christmas Concert - **7:30 pm**

**Sunday 8th December**

Exhibition open **12 noon** until **4:30pm**. Refreshments will be available with music by our local folk band.

If you are interested in sponsoring a tree or would like to be involved in any way as a volunteer, please contact Claire on [Clairelewisjones@btinternet.com](mailto:Clairelewisjones@btinternet.com). You will be made very welcome.

## Harvest Time

### Generosity and Gratitude at Harvest Time.

We celebrated Harvest in October in several ways; on Saturday 5th of October, Sarah Jones and Mike Jump made their marriage vows amongst a Church beautifully decorated with flowers and fruit, corn and vegetables. They had asked their guests to donate to the Foodbank rather than shower them with gifts and so our Foodbank shelves were groaning under the weight of their selfless gesture and their guests' generosity. This was added to by our congregations on the Sunday when Philip Boxall gave us an insight as to how the Foodbank functioned and the Nantwich community who benefitted from the charity.

A Songs of Praise service in the evening was well attended and speakers from the Nantwich Young Farmers Club, the Cheshire Farms Competition and Acton School all spoke about what Harvesting meant to them. A delicious buffet followed which the Social Committee had provided.

On the Wednesday there was standing room only when the whole school visited Church to celebrate the Harvest with songs and readings and another collection for the Foodbank. The Headmaster, Head Girl and Head Boy delivered their produce to the Nantwich Foodbank later in the week.



Mike and Sarah's Wedding

### Acton Church Bibles

The New International Version (NIV) bibles, which are in the pews, need replacing. The new bibles will also be NIV bibles, but a more up-to-date version. Would you be able to put one on your Christmas List? If so and you are able to support this initiative, the cost is £10.00 and, we hope, will have the donor's name inside. Please contact Joyce 07703292900 or Rev Anne 01270 628864 to place an order.

The new bibles will be dedicated by the Bishop when he visits in January.

### Christmas Concert

At Acton we are delighted to host our annual Christmas Concert.

**Saturday December 7<sup>th</sup> at 7:30 pm**

**Do join us for an evening bursting with Yuletide Felicitations! Performing under the musical directorship of Alison Megicks, we have**

**“The Funky Choir”.**

**Tickets £10 each can be obtained from “Tea at the Tower” (every Sunday afternoon) or by contacting Stephan 07731800663 (01270 624135)**

## Gospel Concert

Nantwich Methodist Church members' invite you to join them for a wonderful Gospel Concert performed by the Jake Leg Jug Band as part of their national tour. The concert will be on Saturday 23rd November 2024 at 7.30pm. Tickets cost £10 each and are available by contacting [www.nantwichmethodist.co.uk](http://www.nantwichmethodist.co.uk)

A link to the band's website can be found here: <https://www.thejakelegjugband.com/gigs-2>

All are welcome.

## Christmas Greetings

We have Christmas Cards, depicting the Messy Church Nativity last Christmas, for sale in Acton Church or through Joyce Percival 07703292900.

They are A5 size and are £4.00 for a pack of 10 including envelopes.



## Christmas Greetings



In September Old Macdonald sowed some seeds but not all did very well! We sang the parable of The Sower with great performances by the children as blackbirds, seeds and weeds and discovered what sort of soil we need to be if the kingdom of God is to flourish. Miriam's Malteser prayers went down well and then we made edible soil pots, prayer-crows, and pecking birds. The discussion focused on what was Jesus' appeal as a massive audience gathered at the lakeside. On 19th January 2025 Bishop Sam will be coming to help us celebrate our 10th birthday. If you haven't tried Messy Church yet, accept our invitation!



## Stole records Industrial History

You may have heard in the news that the Ratcliffe-on-Soar Power Station in Nottinghamshire was decommissioned at midnight on 30 September 2024, the last coal fired power station to be closed in the country.

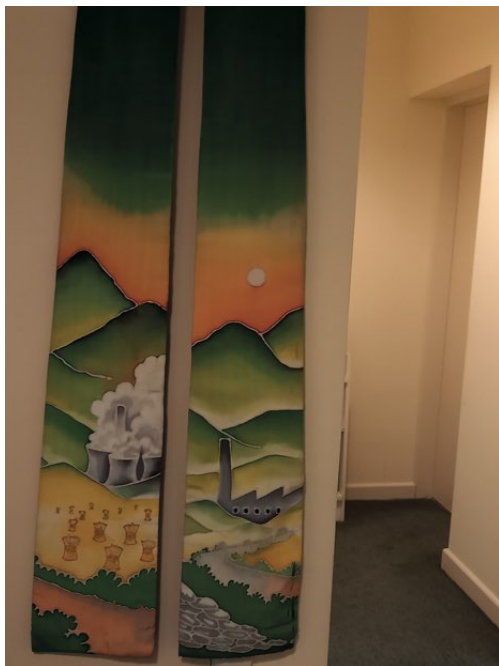
At that historic moment, my green stole became a record of our industrial history. When I designed my stoles ahead of my ordination in June 2000, I wanted designs that were not only meaningful and personal to me and my story of life and faith, but would continue to be meaningful in 40 years time and more.

The green stole was designed to show the countryside around South Nottinghamshire where I grew up and the countryside around my curacy parishes up above Glossop in the Pennines. I also wanted the countryside as it is, not some twee representation that we would like it to be. That was simple to solve. My curacy

parishes were formerly mill villages, so a mill went into the design. The area I grew up in was dominated by the Ratcliffe-on-Soar Power Station. If you couldn't see the cooling towers, you could see the steam rising from them.

The power station was a landmark noting that we were nearly there when we had been on long journeys as children. It was a landmark to navigate by when I was map reading as a Guide and Ranger as a teenager. When I left home it became a landmark that I was 'home'. As a young child during the 1972 miners' strike, I watched as the vast coal stock slowly dwindled. When the same happened in the 1984/5 Miners' Strike, it became a symbol of justice and suffering to a young adult. Now it has become a symbol of a brighter, greener future as 'green energy' supplies expand and the need for carbon producing coal power is no-longer required.

*Reverend Anne*



## Acton & Reaseheath WI

As the Summer closes and we move closer to the end of the year we can look back at our photos and remember what we enjoyed this year. In August we enjoyed a visit to Shropshire Petals which grow a vast array of flowers which once harvested are dried to make biodegradable confetti. The flowers are all picked by hand and shipped all over the world. The fields were ablaze with colour from the sunflowers, delphiniums, cornflowers and calendular to name a few. It looked magnificent driving across towards the fields as if the farmer was growing a rainbow. The weather was very warm and sunny and fortunately we were blessed with plenty of cloud cover as we walked around the fields admiring the flowers and their scent. Our hosts had provided their visitors with huge tents to protect them from the weather whilst they



ate their picnic or enjoyed food from the vendors on site. Some members' bought some of the flowers and other products on sale. Everyone agreed we had a lovely day and would recommend it as a place to visit.

In September we held our Craft and Produce Show and our members' entered produce and crafts they had grown or made at home. We had a vast array of items which highlighted our members' skills and gave the judges a difficult time selecting our winners. Eventually cups were awarded to Fiona Ross for Handicrafts, Tracey Foster for Garden Produce, Joyce Percival and Yvonne Fairclough jointly for Flowers and Joyce Percival for Home Produce. Well done ladies. The produce was then auctioned off at the end of our meeting.

**If you would like to know more about our WI please come and join us at Acton Parish Hall where we meet every second Monday of the month at 7pm March to October and 1.30pm November to February or phone Fiona Ross for more information on 07791 171415. You will be very welcome.**

At the Malbank Group meeting we welcomed back for a second year running Lesley Smith, who this year entertained us by appearing as Margaret Thatcher. Lesley shared with us many facts about the life of the "Iron Lady" and as always left us curious to learn more - **See the Worleston WI report on page 30 for more.**



**theWI**  
INSPIRING WOMEN

More Photos on next page



## Acton Community Film Night

The village movie nights are a great opportunity to meet up with local friends and neighbours and to enjoy some excellent films. The Movie nights are hosted at Acton Parish Hall, where doors open at 7:00 pm and the film starts at 7:30 pm. Tickets £5 per person. Bar and refreshments are available. No pre-bookings - entrance on a first come first served basis only (so arrive early to avoid disappointment).

Funds raised are go towards restoration of St Mary’s Church tower and Acton Parish Hall.

Dates:

Friday 8 November

‘Made in Dagenham’ - certificate 15 - made by the director of the very successful production ‘Calendar Girls’. This film has a feel good factor and enjoys an excellent 1960s period feel. It maps the story of the women who brought in equal pay for all.

Friday 13 December

Christmas film night - title to be announced.

Further information from: [clairelewisjones@btinternet.com](mailto:clairelewisjones@btinternet.com)



# Ash House Canine Adventure Play Park

## 3 Acre Secure Dog Walking Field



Find us on  
**Facebook**



Tel: 01829 760622  
07857 545558

Wettenhall, Winsford, Cheshire. CW7 4DQ

[www.ashhousekennels.com](http://www.ashhousekennels.com)



## A.W.Burrows & Son

Independent Family Funeral Directors



ESTABLISHED: 1841



Complete Funeral Arrangements, Funeral Plans Arranged,  
Personal Day and Night Service,  
Private Chapel of Rest in Peaceful Rural Surroundings  
Snowdrop Villa, Swanley, Nantwich, Cheshire, CW5 8QB



**01270 524243 / 07711468917**

Email : [barb.burrows2@gmail.com](mailto:barb.burrows2@gmail.com)

[www.awburrowsnantwich.co.uk](http://www.awburrowsnantwich.co.uk)

## Cross Country Pages

**HAPPY BIRTHDAY**

this month to

Alice Edwards      Maggie Harrington  
 Ava Robinson      Scarlett Heath  
 Edward Kinsey      Thomas Alexander  
 Imogen Elliott

### Special Birthdays

Happy Birthday to **Bethany Daley** as she celebrates her 21st birthday this month

### Congratulations

To **Ashleigh and Will Ellwood** on the birth of their baby daughter **Arabella Darcy on 27th June.**

The parish magazine is already a big hit with Arabella!!



Also to **Chris & Heather Pope** on celebrating their Ruby Wedding Anniversary this month! We wish them many more happy years together.

Belated Anniversary congratulations to **Jane & Clive Brookes** who celebrated their 30th wedding anniversary in October.

## Ladies' Lunch

Thursday 14<sup>th</sup> November

at

Farmers Arms, Ravensmoor

12:30 pm

For further details contact:

Heather (528755), Isobel (624521),

Ann (528273) or

Joyce (07703 292900)

## Mobile Library

Nov	Dec	Dec	Tuesdays	
12 <sup>th</sup>	3 <sup>rd</sup>	24 <sup>th</sup>	Arr	Dep
Badger Church Minshall			10:20	10:45
Home Farm Park South			11:10	11:20
Lea Green				
Home Farm Park North			11:30	11:50
Lea Green				
Wettenhall Church			12:05	12:20
Station Rd Calveley			13:35	13:55
Tollemache Arms			14:05	14:30
Alraham				

Nov	Nov	Dec	Thursdays	
7 <sup>th</sup>	28 <sup>th</sup>	19 <sup>th</sup>	Arr	Dep
Pinfold Craft Centre			11:00	11:25
Poole				
Worleston Station			11:35	11:45
Aston Juxta Mondrum				
Worleston Village Hall			11:50	12:10

Nov	Dec	Dec	Thursdays	
14 <sup>th</sup>	5 <sup>th</sup>	26 <sup>th</sup>	Arr	Dep
Farmers Arms			10:00	10:15
Ravensmoor				
Goodwill Hall Faddiley			10:30	10:50
Greenfields Farm			11:05	11:20
Gradeley Green				

**Geoff and Diane Darlington** would like to say a big "Thank you" to all their friends and family for all the beautiful cards and gifts and good wishes they received for their Ruby wedding anniversary and Geoff's 80th birthday. (They have had quite a year!)

## The Apostles; James the Lesser

### James the Lesser, Son of Alphaeus

This is the last apostle in this series, and in many ways is the most confusing and little known. He is James the Lesser, or minor, the little, or younger, to distinguish him from James the Greater, the son of Zebedee. His family history is also very confusing, he is commonly known as the son of Alphaeus, but his mother is named Mary, a very common name for women in the Gospels. His mother is sometimes referred to as Mary Clopas, Mary, wife of Alphaeus, or Mary, the sister of the Virgin Mary, Mother of Jesus. In the Gospels James the Lesser usually appears following a reference to his mother, but without actually stating which Mary is being described. Sometimes he is described as 'the brother of Jesus' because they are said to be very similar in body, appearance and manner. No matter what his heritage, he became known as James the Just for his great holiness.

Perhaps it was that holiness which led him to become the first Bishop of Jerusalem and the first person to sing at the first Mass of the Christian faith. We know nothing of his life before being called to be an apostle, and little of his life when Jesus was alive. However, he may have been martyred in Jerusalem for preaching the Christian faith. It is said that he was stoned to death by the Jews witnessing his preaching and then buried by the temple walls. As with many of the apostles there are alternative legends concerning his death. One tradition is that he was crucified at Ostrakine, an ancient Egyptian city lying between modern day Gaza and Alexandria. He had travelled there to preach to the population. He is believed to have died in 62AD, and his Feast Day is 1<sup>st</sup> May in the Anglican Church. He is the patron saint of apothecaries, people at the end of their lives and milliners, a rather random mix of causes. In art he is often holding a fuller's club, which may explain his patronage of milliners with their clean, thickened wool felt for hat making.

We can never know the actual details of the lives of the apostles, they appear in each of the Gospels in different versions of the stories surrounding Jesus and his life.



*Heather Pope*

### Remembrance

**All Remembrance Services  
are at 10.50am to join the nationwide  
two minutes silence at 11am**



### Thank You

Our thanks to Canon Malbon who has guided us through some more of the Bible in the last few weeks.

Also, to Deana Emerton who invites us into her home.

It is much appreciated so many thanks to you both.

# Ash House Boarding Kennels

When you go on holiday, your dog should too!

- ❖ Licensed luxury purpose built heated canine accommodation
- ❖ Set in breath taking central Cheshire countryside
- ❖ Lots of countryside exercise and TLC
- ❖ All breeds and family groups welcome
- ❖ Doggy day care
- ❖ Professional dog grooming and styling

Tel: 01829 760 622

Mob: 07857 545 558

Mon - Sat 9.30 - 11.00am

4.00 - 5.30pm

Sun & Bank hols 4.00 - 5.30pm

Closed Christmas day for drop off & collection

Wettenhall, Winsford, Cheshire. CW7 4DQ

[www.ashhousekennels.co.uk](http://www.ashhousekennels.co.uk)



**HJ Lea Oakes**

Independent British Millers / 1675

**MILLERS OF HIGH QUALITY ANIMAL FEEDS**

**DELIVERING HIGH PERFORMANCE**

- PROVEN CONSISTENT CONVENTIONAL & ORGANIC FEEDS
- EXCEPTIONAL TECHNICAL SUPPORT
- FLEXIBLE PRACTICAL APPROACH



T: 01270 782222

[www.hjlea.com](http://www.hjlea.com)



### What a pile of presents!

The charity Teams4U in Wrexham is hoping these little items are gathering in people's houses right now ready to bring joy to children's faces in Ukraine and Eastern Europe this Christmas. Vova, from Ukraine wrote after Christmas last year, "Thank you so much for the gifts for the children, for the sparkle and joy in their eyes, for giving the little ones the opportunity to believe in miracles again".

Amazingly Teams4U has delivered, year on year 64,000 Christmas Shoeboxes full of presents to children, many of whom have never received a present at all. It's 'Love in a Box' and they can do it because of people like you. Each box is an unconditional gift from one person to another, no strings attached. The donated shoeboxes are distributed through established partnerships with schools, nurseries, hospitals and orphanages. This way the gifts reach children who may not otherwise receive a present and Teams4U emphasises building long-term relationships with these communities, fostering a spirit of care and support that extends beyond the holiday season.

Sending a Shoebox is a delightful thing to do. Take a look on Teams4U website [teams4u.com](http://teams4u.com) for advice and ideas. But here's a list to get you started:

Children's boxes have age categories Boy/Girl 3 to 5 years, 6 to 11 and 12 plus. Wrap a shoebox in Christmas paper, being careful to wrap the lid separately so it can be lifted off without spoiling the paper. Ideas for boys or girls: Toothbrush and toothpaste, hair

accessories/brush, soap and face cloth, stationery and paper, pencils, gloves, hat and scarf, new socks/underwear, a soft toy, game, puzzle, small musical instruments, toy vehicles, small ball, sweets (use by date June 2025), a photo and message from yourself. Even pop in a soft toy for the older children; their lives may have included experiences that something soft and comforting may help with.

Teams4U also send out Home Boxes to whole families in need. This could include: Candles, cooking utensils, plastic containers, towels, washing up cloths, hairbrush, small toiletries, bowls and cups, small decoration, soap, paper and pens, clothes pegs, headscarves, new socks and underwear, jewellery and new makeup.

Find a big elastic band to go around your filled Shoebox and include an envelope with £3 in cash to help cover the cost of transportation. Even better go onto the website and donate it directly, putting a note inside the box to say you have done so.

Well, Teams4U are already gearing up to send these boxes full of joy and pleasure to people with so little of it in their lives. For this area of Cheshire St Mary's in Nantwich is acting as the local hub. They'll be collecting up Shoeboxes from Friday November 1st to Thursday November 14th, Monday to Saturday from 9.30-4.30 and Sunday during Service times. If you have trouble sourcing a Shoebox take a peek in the porch at St Mary's Nantwich when you're in town and they'll do their best to provide some ready-wrapped, or the flat-pack boxes from Teams4U.

Please spread the word amongst friends, colleagues, organisations and schools and let's see how much love-in-a-box we can send. It maybe that the Shoebox is the only present that these children will have ever received, or indeed will receive as they grow up. What a thought!

Local contact: Sue Hutt  
[Xmasshoeboxstm@gmail.com](mailto:Xmasshoeboxstm@gmail.com)

## Recipe

### Bonfire Night Gingerbread

#### Ingredients

- 225g SR Flour
- 1 tsp Bicarb of soda
- 2 tbsp Ground ginger
- 1 tsp Ground mixed spice
- 100g Diced butter
- 100g Black treacle
- 100g Golden syrup
- 100g Light muscovado sugar
- 1 Beaten egg
- 275 ml Milk

#### Method

- Preheat oven 180C/160CFan/Gas 4
- Line 30x23x4cm tin with greaseproof paper
- Mix the flour, bicarb, ginger & mixed spice in a large bowl
- Heat the butter, treacle, syrup & sugar in a saucepan until the butter has just melted.
- Set aside to cool slightly
- Pour the butter mixture into the dry ingredients, add the egg & beat with a wooden spoon.
- Gradually pour in the milk & beat until smooth.
- Pour into the tin & bake for about 35 mins until dark golden & springy to the touch.
- Leave to cool in the tin for 10 mins & place on a wire rack to cool.

**Makes 24 pieces.**



Enjoy



NURSERY · CAFÉ · COMMUNITY



# CANALSIDE

## GARDEN CENTRE

Seasonal plants, Hanging baskets.  
Workshops and Classes.  
Café coming soon!

[Dani@Canalsidegardencentre.co.uk](mailto:Dani@Canalsidegardencentre.co.uk)  
07493 526882

Little Porters Hill  
Frith Lane  
Wrenbury  
Nantwich  
CW5 8HQ





# BioBloom

SOIL ENRICHER

Great For Your Garden, Great For Our Planet

**FREE**

Cheshire Delivery  
Available in  
40L and  
750L bags

BioBloom Soil Enricher is a natural fertiliser, rich in N-P-K and packed with micro-nutrients that plants, crops, and flowers need to thrive

Containing high levels of organic matter, peat free and has no added chemicals.  
Easy to use & perfect for all borders, veg patches, baskets and beds

Local and sustainably made from renewable energy production at our Nantwich farm

**Nourish your soil with BioBloom Soil Enricher to achieve a vibrant, thriving garden**

Find out more or get in touch:

[www.thomassonfarms.co.uk](http://www.thomassonfarms.co.uk)  
01270 291037



# FOR SALE: CHURCHE'S MANSION, NANTWICH

*An Iconic Gem in a Heritage Haven*



Discover *Churche's Mansion*, a rare Grade I listed property in the charming town of Nantwich. One of approx 250 in the UK, this distinguished estate offers unparalleled potential for:


- *Wedding venue with licensed premises*
- *Fine dining (previously an award-winning restaurant)*
- *Exclusive private gentleman's club or casino subject to licensing*
- *Luxurious multigenerational living*
- *Proposed luxury living apartments (subject to planning)*




*Elevate Your Legacy:*


Owning *Churche's Mansion* is not just a purchase; it's an investment in elegance and prestige.



 [gem@hiddengems.properties](mailto:gem@hiddengems.properties)

 +44 (0) 7543 322499

 [hidden\\_gems\\_cheshire](https://www.instagram.com/hidden_gems_cheshire)

 [Gemma Peters](https://www.linkedin.com/in/gemma-peters)



St Oswald's Church, Worleston			
<b>Sidespersons</b>		<b>Coffee</b>	
10 <sup>th</sup> Nov	Alison Stokes	Diane Darlington	
24 <sup>th</sup> Nov	Pam Haigh	Anne Fletton	
<b>Flowers</b>		<b>Cleaning</b>	
10 <sup>th</sup> Nov	Diane Darlington	Nov	Any Volunteers?
24 <sup>th</sup> Nov	Jill Alexander	Dec	Any Volunteers?
<i>Visit: <a href="http://www.worlestonchurch.org.uk">www.worlestonchurch.org.uk</a></i>			

**Condolences**

We send our deepest sympathy to Pam Haigh on the death of her husband, Michael,  
We assure her of our love and prayers.

This lady, Diane Darlington, is the one who will supply the coffee at St Oswald's on the first Saturday of every month. She also brings a variety of delicious home baked cakes.

**Do come and join us.  
You will be very welcome.**

**Remembrance**

**Our service on Remembrance Sunday 10<sup>th</sup> November will begin at 10.50am so that we can hold the two minute silence outside at the war memorial, and remember those from our parish who gave their lives in the two World Wars.**



**You are most welcome to join us at this service.**



**Coffee and Cake**

Saturday 2<sup>nd</sup> November from 10-12 noon in Church.  
Come along and enjoy Coffee, Cake and Chat.  
Everyone is very welcome to pop in for as little or as long as they wish.



**WORLESTON VILLAGE HALL Art Exhibition**

**Saturday 16th & Sunday 17th November  
10am - 4pm**

**Display & Sale of Local Artists Work & Cards**

**Refreshments & Cake available  
Free Entry & Parking**

**Main Rd. Worleston, Nantwich, CW5 6DN**

**WORLESTON VILLAGE HALL**

**CHRISTMAS FAIR**

**Sunday 24<sup>th</sup> November  
10am - 2pm**

**Free Craft Sessions for Children**  
(subject to capacity restrictions)



**CHRISTMAS WREATH & PLANT SALE**

**Sunday 8<sup>th</sup> December  
10am - 3pm**

**[worlestonvillagehall@gmail.com](mailto:worlestonvillagehall@gmail.com)**

## Worleston WI

The Worleston Members' September Meeting had invited speaker Jean Finney to talk to us about the life and work of Joyce Grenfell.

Joyce became famous for her monologues and humorous songs, many of which members' in the audience remembered.

We were all thoroughly entertained by Jean and everyone joined in thanking her for enjoyable entertainment.

Later in September, the Malbank Group held a Group Meeting at Nantwich Football Club with the speaker Lesley Smith who had presented talks to us on other occasions.

This time she came, in costume, to tell us about the life of Margaret Thatcher.

Lesley related the early life of Margaret where she grew up in a small flat over the family shop. Both her father and mother worked in the shop and so did Margaret at times.

Margaret's father had always encouraged her to get a good education and she went to Grammar School and then to university, reading chemistry.

Margaret then went into industry as a chemist before becoming a barrister and then finally a Member of Parliament.

Lesley finished the talk where Margaret became Prime Minister.

Throughout her talk Lesley was informative and humorous and she enthralled us for 45 minutes. As always, Lesley then took questions and spent time talking individually to some members' of the audience. Everybody had a thoroughly enjoyable evening.

Worleston WI October Meeting brought Sarah Darlington of the famous Darlington jams and chutneys. Sarah brought along samples for us to try and gave us lots of information of how she started the business.





# PIGSTY PIZZAS

ENJOY WOOD-FIRED PIZZA PERFECTION  
AT PIGSTY PIZZA FRESH INGREDIENTS,  
SMOKY FLAVOR, AND A CRISPY CRUST—  
YOUR PERFECT SLICE AWAITS. PAIR  
WITH A PINT AND DIG IN

---

## OPENING TIMES

WED 4PM - 9PM  
THURS 4PM - 9PM  
FRI 4PM - 9PM  
SAT 12PM - 9PM  
SUN 12PM - 9PM

WE CAN ALSO CATER FOR PRIVATE  
PARTIES AT HOME OR AT AN EVENT  
SPACE. PLEASE GET IN TOUCH FOR  
MORE INFORMATION

TO ORDER  
AHEAD  
PLEASE CALL  
US ON  
01270691306

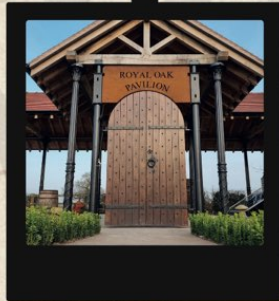
*Order  
Now*

INFO@THEROYALOAKWORLESTON.CO.UK



# THE ROYAL OAK

## WORLESTON



QUIZ NIGHTS  
SUNDAY ROAST  
DOG FRIENDLY  
LIVE SKY & BT SPORT  
CHILDRENS PLAY AREA  
CAR SHOWS & BIKE NIGHTS



*voted top 3 restaurant on tripadvisor*

### THE ROYAL OAK WORLESTON

94 Main Road, Worleston, Nantwich, CW5 6DN  
01270691306

[info@theroyaloakworleston.co.uk](mailto:info@theroyaloakworleston.co.uk)





# CHRISTMAS AT THE ROYAL OAK WORLESTON

2 COURSES £24.95 | 3 COURSES £29.95  
STARTER & MAIN

## Starters

*Parsnip & Apple Soup with Curried Croutons* GFA | VGA

*Ham Hock Terrine with Pickled Slaw & Toasted Ciabatta* GFA

*Smoked Salmon & Crab with Avocado & a Dill Cream Cheese Tian*

## Main Course

*All served with Roast Potatoes, Carrots, Broccoli & Sprouts*

*Roast Turkey with Pigs in Blankets, Stuffing & Gravy* GFA

*Spiced Sweet Potato & Spinach Pie with Gravy* VGA

*Slow Braised Pork Belly with Crunchy Bacon & Apple Cider Cream Sauce* GFA

*Smoked Haddock with Prawn, Anchovy & Leek Gratin* GFA

*8oz Sirloin with Horseradish Mash* GFA  
+£4 Supplement

## Dessert

*Traditional Christmas Pudding with Brandy Sauce* VGA

*Salted Caramel & Chocolate Torte*

*Homemade Chocolate Brownie with Ice Cream* GFA

*Local Cheese Board with Celery,  
Grapes, Chutney & Crackers* GFA  
+£2 Supplement

GFA - GLUTEN FREE OPTION AVAILABLE | VGA - VEGAN OPTION AVAILABLE



THE ROYAL OAK  
WORLESTON

## Calveley School

We were so happy to welcome so many new and current families to Calveley Fest, our open day, in early October. We had a guest parrot, tortoise and two ponies as well as sports, crafts, circus skills and refreshments for everyone to enjoy. We raised lots of money for FROCS (our PTA) which is going to be spent on a new piano and a trip to the panto at Christmas. We feel really fortunate to be part of such a supportive and fun-loving community. If you or anyone you know is looking for a reception or nursery place for 2025 we're always open to visitors to tour the school and meet our teachers. Please phone the school office on 01270 918360, the deadline to apply is 15th January 2025.

All the children from school enjoyed a trip to Wettenhall Church to celebrate Harvest and sing some Harvest songs. The younger ones shared jelly and biscuits while the older children played word games with the word HARVEST - how many words can you make with those letters?

We are so proud to announce that we have been awarded the prestigious Gold Quality Mark from the History Society in recognition of our exceptional provision for History education. You might remember the installation of a giant history timeline in the playground last term, it even includes key events from our local area.

Also this month, to celebrate European languages day, we dressed up to represent European countries and tasted lots of different foods. Children have been learning to count in French and ask how their friends are feeling, and even discuss their favourite and least favourite subjects.





See more pictures from our Harvest Service on pages 6 and 7

### FLAT TO LET

A beautifully converted, fully furnished, one bedroomed, centrally heated, self-catering flat in the lovely village of Swanley, near Nantwich, surrounded by lovely gardens and fields. L shaped fitted Kitchen with breakfast table and snug area, shower room and king size bedroom with ample storage and door to patio. Separate Utility Room housing washing machine, tumble dryer and freezer. Off road parking.

Suitable for single person or couple. For further details and to discuss length of let or to arrange to view please contact:

[01270 524851/07900266377.](tel:0127052485107900266377)

[Email: barb.burrows2@gmail.com](mailto:barb.burrows2@gmail.com)



## Minshull Pet Services

Dog Walking  
Pet Sitting (in home also cover Small Holdings)  
Dog Training  
Pet Taxi  
Emergency last minute cover

**Mobile: 07551 130 428**

If no answer, please text or leave me a voicemail, as I will be out walking doggies thank you, I'll respond the same day.

**Also on whatsapp**

**Email: [sharon@minshullmorepaws.co.uk](mailto:sharon@minshullmorepaws.co.uk)**



I can also offer bespoke services, contact me to discuss your requirements. Fully insured, DBS Checked, Canine First Aid trained. Qualified in Advanced Animal Behaviour and a Member of the Institute of Animal Care and Education.



## St Oswald's School, Worleston

Our Ethos team have been busy organising a Macmillan coffee morning. Donations of cakes, biscuits and sweet treats were sold on the day and the morning was very well attended. In the afternoon the children also had the opportunity to decorate a cupcake to take home. We raised a whopping £163.80 altogether. A big thank you to everyone for all of your support.

Hedgehogs and Foxes have been taking part in Bikeability which is a progressive programme where riders will first master cycle handling skills in motor-traffic-free environments (Level 1), then develop their skills and confidence to cycle on single-lane roads and simple junctions with mostly moderate motor traffic flows (Level 2), before tackling busier or faster roads. The children have all really enjoyed the programme and have been enjoying putting their new skills into practice.

The Owl Class have been learning about Harvest and thankfulness. We have been looking at the story of the gingerbread man and were really grateful to receive a donation of gingerbread, ready to decorate, from CHATWINS Bakers and Confectioners. We decorated the gingerbread and learnt about how the different ingredients grow. Thank you Chatwins from the children of St Oswald's.

Our Parent and Teacher Association ran a film night for all of the pupils in Reception to Year 6 after school. There were two films on offer that were voted for by the children. Children enjoyed their tea, a snack bag with sweet and savoury treats and unlimited drinks.

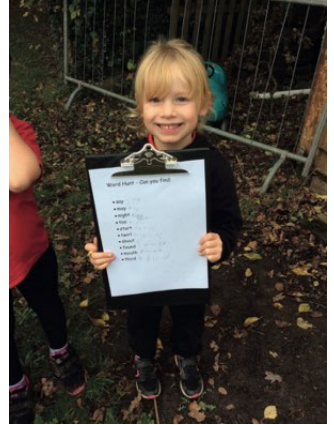
Owls and Deers Class children enjoyed a special phonics day. The children engaged in lots of fun phonics activities and had a wonderful time practicing their sounds. Even the Nursery children were able to join in with their Reception friends.

The whole school came together for a Harvest Service at St Oswald's Church. The service was very well attended and everyone gave thanks with us. We collected foods for Nantwich Food Bank and are thankful to everyone for their kind donations.





Thank  
You





# Graham Tresidder & Son

CREWE & NANTWICH FUNERAL SERVICES

Independent Family Funeral Directors | SINCE 1977



An individual caring & professional 24 hour service

62 Hospital Street  
Nantwich  
CW5 5RP

448 Crewe Road  
Wistaston, Crewe  
CW2 6PZ

The Square  
Audlem  
CW3 0AB

Golden Charter   
Smart Planning for Later Life



[www.nantwichfuneralservices.co.uk](http://www.nantwichfuneralservices.co.uk) | 01270 812512

*Rural Location*

*Home Cooked Meals*

*Established 25 years*

*Preschool French*

*Children's Yoga*



# Rebecca's

Preschool and Baby Room

The Goodwill Hall, Faddiley, Nantwich  
01270 524253 07852 182694



## Hitchen Electrics

Local

Honest Service  
No job too small

**Mark Hitchen**  
Electrician

**07817 480283**



## GRANTS BUTCHERS

(Within Minshull Nurseries)

A fine range of quality  
meats.

Everything from a crown  
roast for your dinner party,  
to a bone for the dog!

Quality service and advice.  
"It's what we do"  
(7 days per week)

Also Hog Roasts, BBQ's  
and Hot Carverys.  
01270 522068



### SUPERB CLEANING

- |                            |              |
|----------------------------|--------------|
| CARPETS                    | STONE        |
| UPHOLSTERY                 | TILE & GROUT |
| LEATHER                    | WOOD         |
| RUGS                       | • DRIVEWAYS  |
| CURTAINS                   | • PATIOS     |
| MATTRESSES                 | • DECKING    |
| STAIN REMOVAL & PROTECTION |              |



Tim Shaw recommended & used by leading  
home furnishing retailers since 1997.

[www.shawclean.co.uk](http://www.shawclean.co.uk)

Cheshire Areas - FREE advice, quotes and fully insured.

**07976 559072**  
**0800 6128817**



## Oil distributors to home, farm & industry



NWF Fuels employ local people with local knowledge who are based at our fuel depot in Nantwich. This means we have an unrivalled knowledge of the area and we always keep fuel in stock so we can offer an outstanding delivery service.

Whether you are looking for fuel oil deliveries to your home, business or farm - please call our local, fast and friendly team on **01829 260672**, they will be delighted to help.

- *Friendly, prompt service*
- *Emergency Deliveries*
- *Tractor Diesel and Lubricants*
- *Road Fuels and Fuel Cards*
- *Boiler Servicing*
- *Tank Replacement*
- *Budget Payment Plans*
- *Automatic Top-Up Service*

# 01829 260672



[www.nwffuels.co.uk](http://www.nwffuels.co.uk)

NWF Fuels, Wardle, Nantwich, Cheshire, CW5 6AF



City & Guilds  
Qualified



- **Electrical & Plumbing**
- **Repairs & Maintenance**
- **Decorating & Handyman**
- **Emergency Call-Out**
- **Free Estimates**

Please Call Paul on  
**07850 881 915**

## Advertise Here

For affordable local  
advertising distributed to  
900 local homes  
email: [ccp.news.advertising@gmail.com](mailto:ccp.news.advertising@gmail.com)  
Or call Peter on  
07939 954806



### JM CARS YOUR LOCAL TAXI COMPANY

TEL / FAX 01270 528006  
MOBILE 07951 590756

4/6 SEATER VEHICLES

Reaseheath  
College

## INDUSTRY FOCUSED CAREER READY



**Joseph Clarke Tree Care**  
All aspects of tree work undertaken  
01270 528311 / 07802 828024  
[clarkestreecare@hotmail.com](mailto:clarkestreecare@hotmail.com)  
Logs for Sale



[reaseheath.ac.uk](http://reaseheath.ac.uk)

## FOR ALL YOUR HEARING REQUIREMENTS

- ✓ FREE Hearing Assessments
- ✓ Latest Hearing Technology
- ✓ Ear Wax Removal
- ✓ Custom-made Hearing Protection
- ✓ Hearing Aid Repairs
- ✓ Tinnitus Solutions and Management
- ✓ Rechargeable Hearing Systems

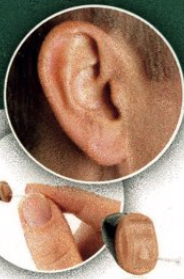
Call us to discuss any aspect of your hearing health:

**01270 611212**

**Nantwich**  
Hearing Centre

12 The Cocoa Yard,  
Nantwich,  
Cheshire CW5 5BL

[www.nantwichhearingcentre.co.uk](http://www.nantwichhearingcentre.co.uk)



4 Star  
\*\*\*\*

*New Farm  
&  
B&B  
Caravan Park*

## Five en-suite rooms in an all-purpose built modern barn conversion

- Locally sourced food
- Set in the heart of Cheshire
- Ideal for the Tarporley area
- Perfect for family holidays/occasions



[www.newfarmcheshire.co.uk](http://www.newfarmcheshire.co.uk)  
telephone 01270 528 213  
long lane wettenhall cw7 4dw

## VALE ROYAL HANDYMAN SERVICES



Friendly, reliable handyman  
available in the local area

Home and garden

No job too small

Free estimates

**Contact Dave**

07958628704

[valeroyalhandyman@gmail.com](mailto:valeroyalhandyman@gmail.com)

*Lenzflair*

Your  
Ideas

Our  
Designs

Working  
Together



Photography & Design

**Photography**

Portraits **Commercial**

Events **Pet Portraits**

**Design**

Brochures **Logos**

Adverts **Magazines**

Tel: 07939 954806

email: [info@lenzflair.com](mailto:info@lenzflair.com)

**Contacts for Baptisms, Weddings and Funerals etc are as follows**

Rev'd Anne Lawson 01270 628864 The Vicarage, Chester Rd,  
Acton, Cheshire,  
CW5 8LG  
Email: [countryvicar@outlook.com](mailto:countryvicar@outlook.com)

**Licensed Readers** Isobel Burnley 01270 624521 [reader.isobel@outlook.com](mailto:reader.isobel@outlook.com)  
Ann Nicholas 01270 528273 [annnicholas0@gmail.com](mailto:annnicholas0@gmail.com)

**Parishes Safeguarding Officer** Mr Tom Doyle 01270 481548  
[tmddoyle@gmail.com](mailto:tmddoyle@gmail.com)

**St David's CW7 4DN**

**St Mary's CW5 8LE with  
St Oswald's CW5 6DR**

**Churchwardens**

Mr R Nicholas  
01270 528273

Mr R Brooks  
01270 528278

Penni Doyle  
01270 481548  
[pennijean58@gmail.com](mailto:pennijean58@gmail.com)  
Mrs J Percival  
07703 292900  
[philippercival@hotmail.com](mailto:philippercival@hotmail.com)

**Other Parish Office holders**

**PCC Secretaries**

Mrs H Pope  
01270 528755

Mrs A Williams  
07870 235 819

**PCC Treasurers**

Mrs G Ward  
01606 554869

Mr J Hickie  
01829 260052

**Organists**

Mr R Nicholas  
01270 528273

Mr P Foster  
01270 626802

Acton Only

**Magazine Reps**

Mrs H Pope  
01270 528755  
[hclp@btinternet.com](mailto:hclp@btinternet.com)

Chris Owen-  
Roberts  
[chrisor@gmx.co.uk](mailto:chrisor@gmx.co.uk)

Acton Only

Contact for St Oswald's, Worleston; Mr M Alexander 01270 624404

All copy for the next magazine must be with your Parish Rep or sent to the Editor

at: [crosscountryparishesnews@gmail.com](mailto:crosscountryparishesnews@gmail.com)

NO LATER THAN Friday 8<sup>th</sup> November 2024

For advertising contact Peter on 07939 954806

or email: [ccp.news.advertising@gmail.com](mailto:ccp.news.advertising@gmail.com)

**When you contact one of our advertisers please mention that you found their advert in our magazine. Their invaluable support helps keep the magazine free for you.**

This magazine is edited and printed for us by Lenzflair 07939 954806



## MACDONALD PORTAL HOTEL

Start the festive season with a Christmas party at MacDonald Portal Hotel, Golf and Spa. You will be treated to a dazzling night of great food and entertainment in an idyllic setting. Enjoy an old-school party with family and friends, or a night of well-earned workplace revelry. The evening will begin with a sparkling drinks reception, followed by a fabulous three-course festive meal, after which you can dance the night away to a live act and the latest hits from our resident DJ. Let us help you capture the spirit of Christmas and make this year's festivities truly memorable.

---

*Cobblers Cross Lane, Tarporley CW6 0DJ*  
t: 01829 734100



[macdonald-hotels.co.uk/portal](http://macdonald-hotels.co.uk/portal)